

CABLE 076 RF: I-PEX MHF PLUG + SMA STRAIGHT PLUG + MULTIPLE CABLE SIZES, 6GHz

SPECIFICATIONS:

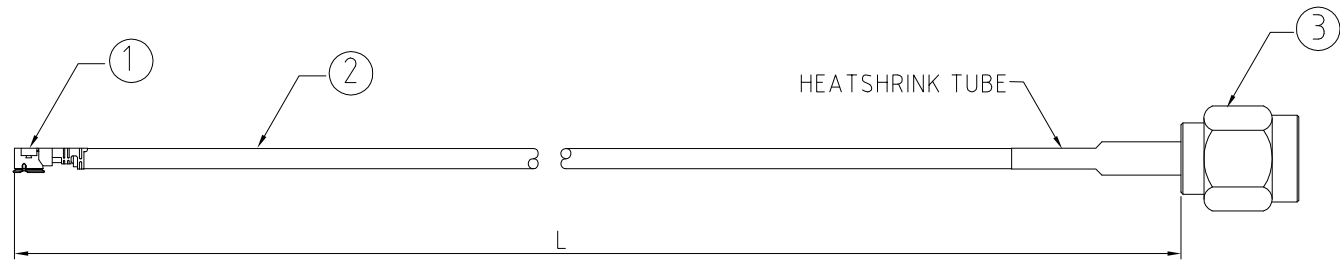
- I-PEX MHF PLUG, GOLD. P/N:
FOR RG178 CABLE: 20351-112R-37.
FOR $\phi 1.13\text{MM}$ & $\phi 1.13\text{MM}$ LL CABLE: 20278-112R-13.
FOR $\phi 1.32\text{MM}$ DS CABLE: 20278-112R-32.
- COAXIAL CABLE, SEE PART NUMBER FOR DETAIL.
- SMA STRAIGHT PLUG, GOLD. P/N:
FOR RG178 CABLE: RFCT-SMA022-M78..
FOR $\phi 1.13\text{MM}$ & $\phi 1.13\text{MM}$ LL CABLE: RFCT-SMA011-M13.
FOR $\phi 1.32\text{MM}$ DS CABLE: RFCT-SMA038-M32.

USAGE PRECAUTIONS: CABLES USING 'MICRO' COAX ARE DELICATE:

- HANDLE WITH CARE.
- DO NOT TWIST; APPLY EXCESSIVE FORCES OR SHARP BENDS TO THE CABLE. DO NOT FORCEFULLY DEFORM WIRES.
- CONSULT CONNECTOR MANUFACTURER'S DATASHEETS FOR DETAILED NOTES ON HANDLING INSTRUCTIONS.

NOTES:

- WORKING FREQUENCY RANGE: DC~6GHz
- OPERATING TEMPERATURE: -40°C TO +85°C.
- IMPEDANCE: 50 OHM.

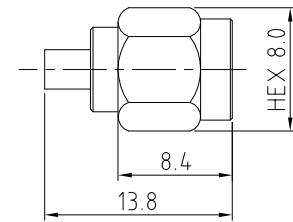


HOW TO ORDER
CABLE 076 RF - X X X - X - X

"L" LENGTH IN MM
eg: 100MM = 100
(MIN. 025-MAX.400)
STANDARD = 100, 150, 200
Tolerance: <50mm : $\pm 2\text{mm}$.
51-200mm: $\pm 5\text{mm}$.
201-400mm: $\pm 7\text{mm}$.

CABLE SIZE OPTIONS:
BLANK = RG178 CABLE, BROWN
1 = $\phi 1.13\text{MM}$ CABLE, GRAY
2 = $\phi 1.13\text{MM}$ LOW LOSS CABLE, GRAY
3 = $\phi 1.32\text{MM}$ DUAL SHIELD CABLE, GRAY

HEATSHRINK TUBE OPTIONS:
BLANK = WITH TUBE (STANDARD)
H = WITHOUT TUBE



SMA PLUG DETAIL DIMENSION

REV. DATE & DRN	10 25/07/09 - CHG RELEASE
11 02/11/12 - NYW	ADD CABLE SIZE 1 OPTION.
12 18/09/13 - NYW	AMEND IPEX RG178 P/N.
13 21/09/15 - NYW	AMEND IPEX RG178 P/N.
14 10/08/18 - CC	ADD HEATSHRINK TUBE OPTIONS
15 13/03/19 - NYW	ADD $\phi 1.13$ LL CABLE OPTION.
16 18/04/23 - NYW	ADD $\phi 1.32$ DS CABLE OPTION.
17 24/04/23 - NYW	AMEND SMA P/N FOR 1.32 CABLE.

Scale: NTS	THIRD ANGLE	Unstated X .XX .XXX ANGLES	Tolerances: N/A N/A N/A N/A	Material SEE NOTE
Drawn: CC				
App'd: XXX	Title CABLE ASSEMBLY	NOT TO SCALE		
Date: 24 APR. '23	Revision: 1.7	Unit: mm		

www.gradconn.com

© THIS DRAWING IS CONFIDENTIAL AND MUST NOT BE COPIED OR DISCLOSED WITHOUT WRITTEN CONSENT

Drawing Number: CABLE 076 RF	
Sheet 1	of 1
Drawing ©	E and O E